



Company Profile

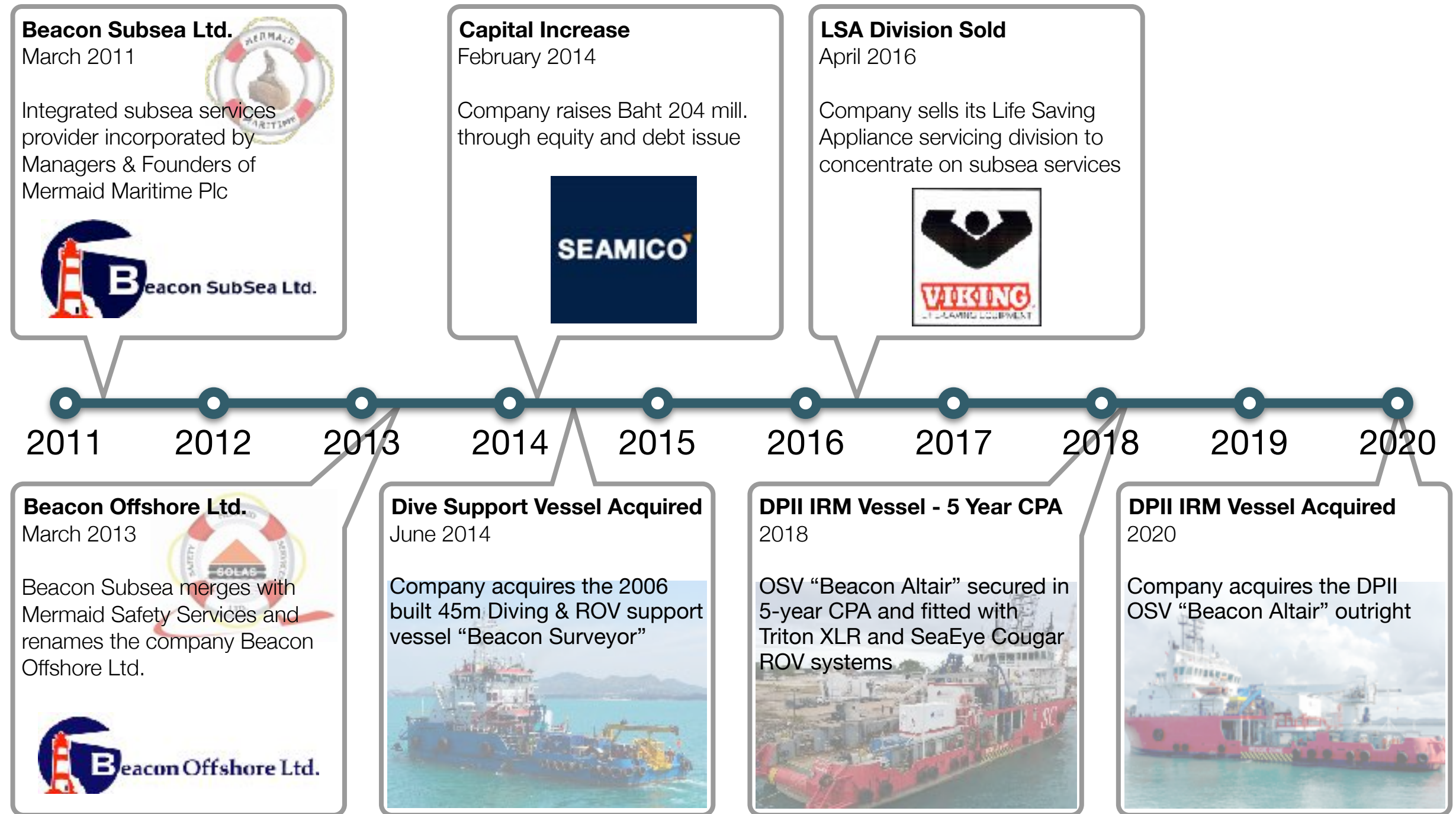
JANUARY 2020

List of Contents

(Click on Text to Jump to Slide)

- | | |
|--|--|
| 3. Background | 14. Regional Reach |
| 4. Senior Management | 15. Facilities |
| 5. Company Structure | 16. People Base |
| 6. Capabilities | 17. DPII - IRM Vessel |
| 7. General Services | 18. Moored IRM Vessel |
| 8. Cable Services | 19. Previously Chartered Vessels |
| Inspection Services | 20. Daughter Craft |
| 9. Overview | 21. Modular Dive Systems |
| 10. Platforms | 22. ROV Systems |
| 11. Pipelines | 23. QHSE & Accreditations |
| 12. Reporting & Engineering | 24. Select Offshore Client Roster |
| 13. Operational Bases | |

Background



Senior Management

Claus B. Jorgensen *Managing Director*

- 30+ years in Offshore Marine and Subsea IRM sectors in S.E. Asia, Middle East, UK
- 1987: Co-founder of Singapore listed Mermaid Maritime Pcl.
- 1987-2006: Executive Director in Mermaid Maritime Pcl.
- 2008-2011: BD Manager, Mermaid Offshore Services Ltd.
- 2011-2013 Co-founder and Chairman of Beacon Subsea Ltd.
- 2013-current: Managing Director of Beacon Offshore Ltd.

Mark A. Shepherd *Commercial Director*

- 30+ years in the Offshore Marine and Subsea IRM sector in UK, Middle East and Asia Pacific; 20 years in senior management positions
- Former Vice Chairman of IMCA Asia Pacific.
- 2005-2010: Executive Director, Mermaid Offshore Services Ltd.
- 2011-2016: Managing Director, SapuraKencana Allied Marine (Thailand) Ltd.
- 2016-current: Commercial Director, Beacon Offshore Ltd.

Kim C. Jorgensen *Deputy M.D.*

- 30+ years in Offshore Marine and Subsea IRM sectors in S.E. Asia
- 1987: Co-Founder of Singapore listed Mermaid Maritime Pcl.
- 1987-2000: Director and Diving Operations Manager for Mermaid Maritime Pcl.
- 2000-2011: Technical & QA Manager for Mermaid Offshore Services Ltd
- 2011-2013 Co-founder and Managing Director of Beacon Subsea Ltd.
- 2013-current: Deputy M.D. Beacon Offshore Ltd.

Scott Crawford *ROV Operations Manager*

- 12+ years as ROV Pilot / Engineer / Project & Senior Project Manager with a background as electronics engineer.
- 2008-2012: ROV Pilot / Technician / Supervisor for Mermaid Offshore Services Ltd.
- 2011: ROV Supervisor for Kreuz Subsea managing offshore ROV team in India.
- 2011-2017: ROV Senior Projects Manager for Mermaid Subsea Services (Thailand) Ltd.
- 2018-current: ROV Operations Manager for Beacon Offshore Ltd.

Stuart P. Walker *General Manager*

- 18+ years as Diving Supervisor and Subsea IRM Project & Vessel Manager.
- 2004-2011: Operations & Equipment Manager for Mermaid Offshore Services Ltd., air diving operations
- 2006-2016: Senior Contract Manager for long-term SPM subsea management programs.
- 2011-2013 Co-founder and Director of Operations of Beacon Subsea Ltd.
- 2013-current: General Manager, Beacon Offshore Ltd.

Company Structure



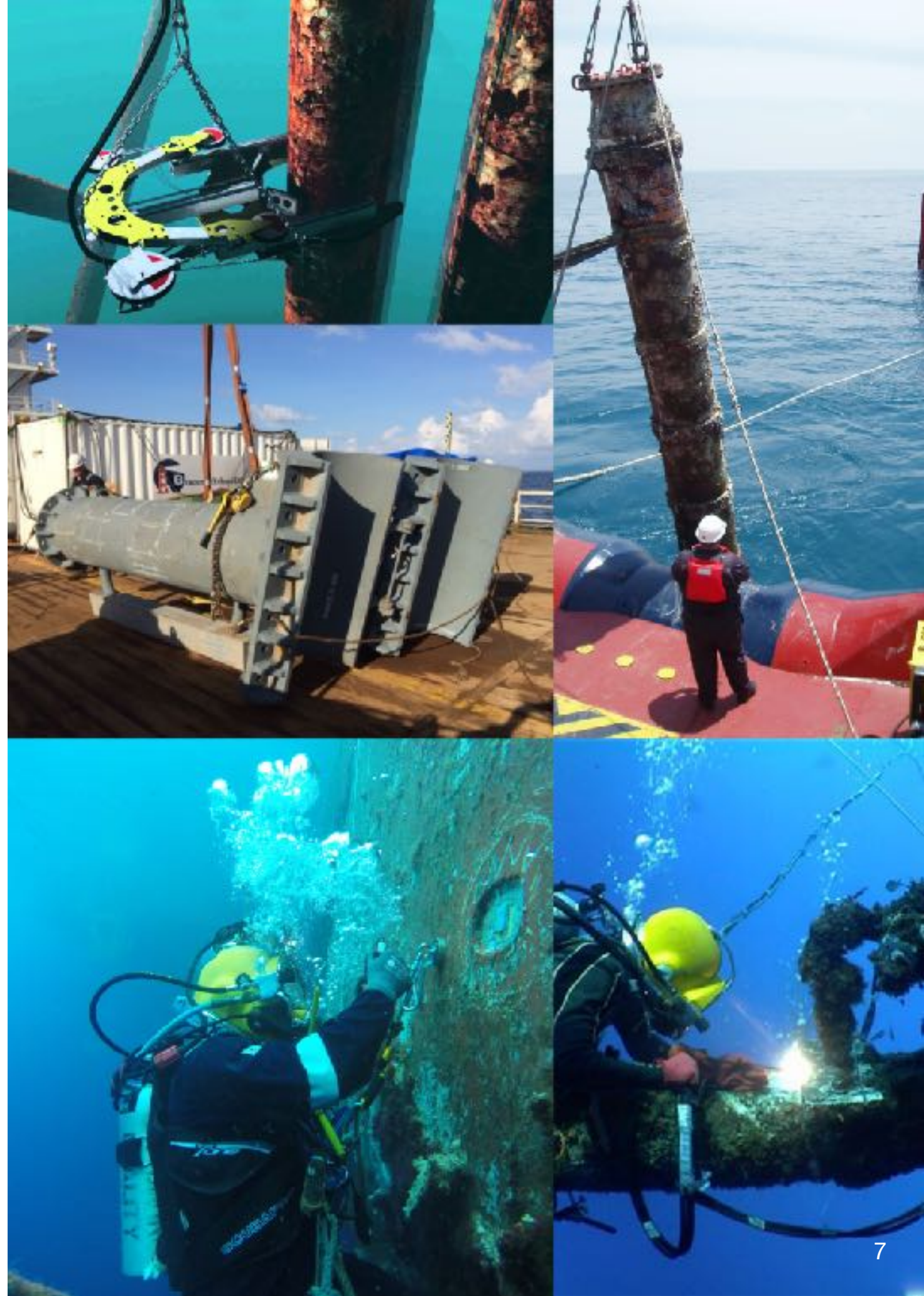
Capabilities

- Air Diving
- Saturation Diving
- ROV Intervention
- Full IRM Service Range
- Specializing in Inspection Services
- Light Construction
- Decommissioning
- Subsea Cable Repair & Installation



General Services

- **Diving & ROV Contractor**
- **Subsea IRM projects
(Inspection, Repair & Maintenance)**
- **Specializing in Integrated
Inspection Services**
- **OSV Owner & Operator**
- **Classification Approved and IMCA
certified Diving & ROV Contractor**



Cable Services

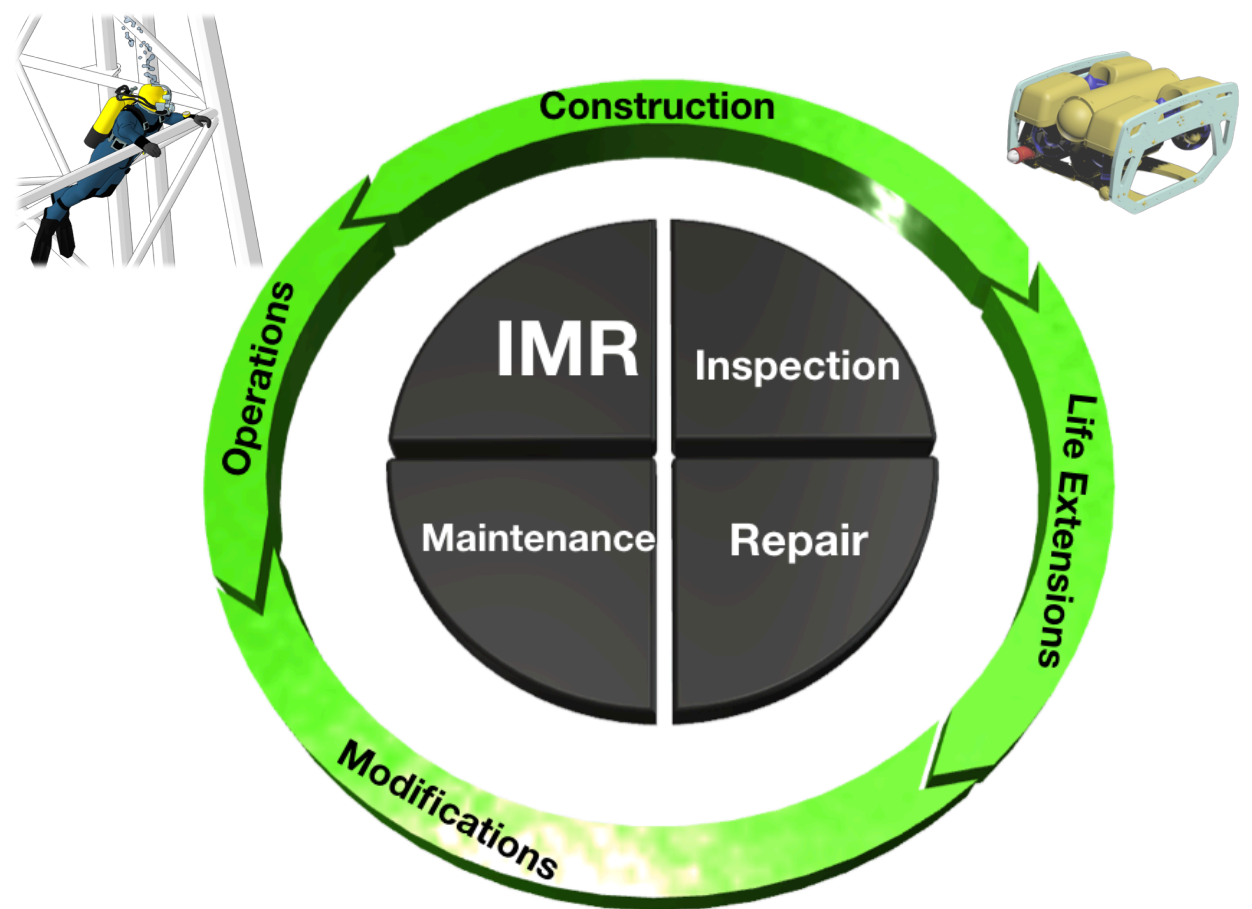
- Beach Cable Pull & Trenching
- Post-lay Burial
- Recovery & Repair
- Positioning & Charting
- Route Survey & Clearance
- Pre & Post Lay Trenching
- Protective Armoring Installation
- In-Service Inspections



Inspection Services

Overview

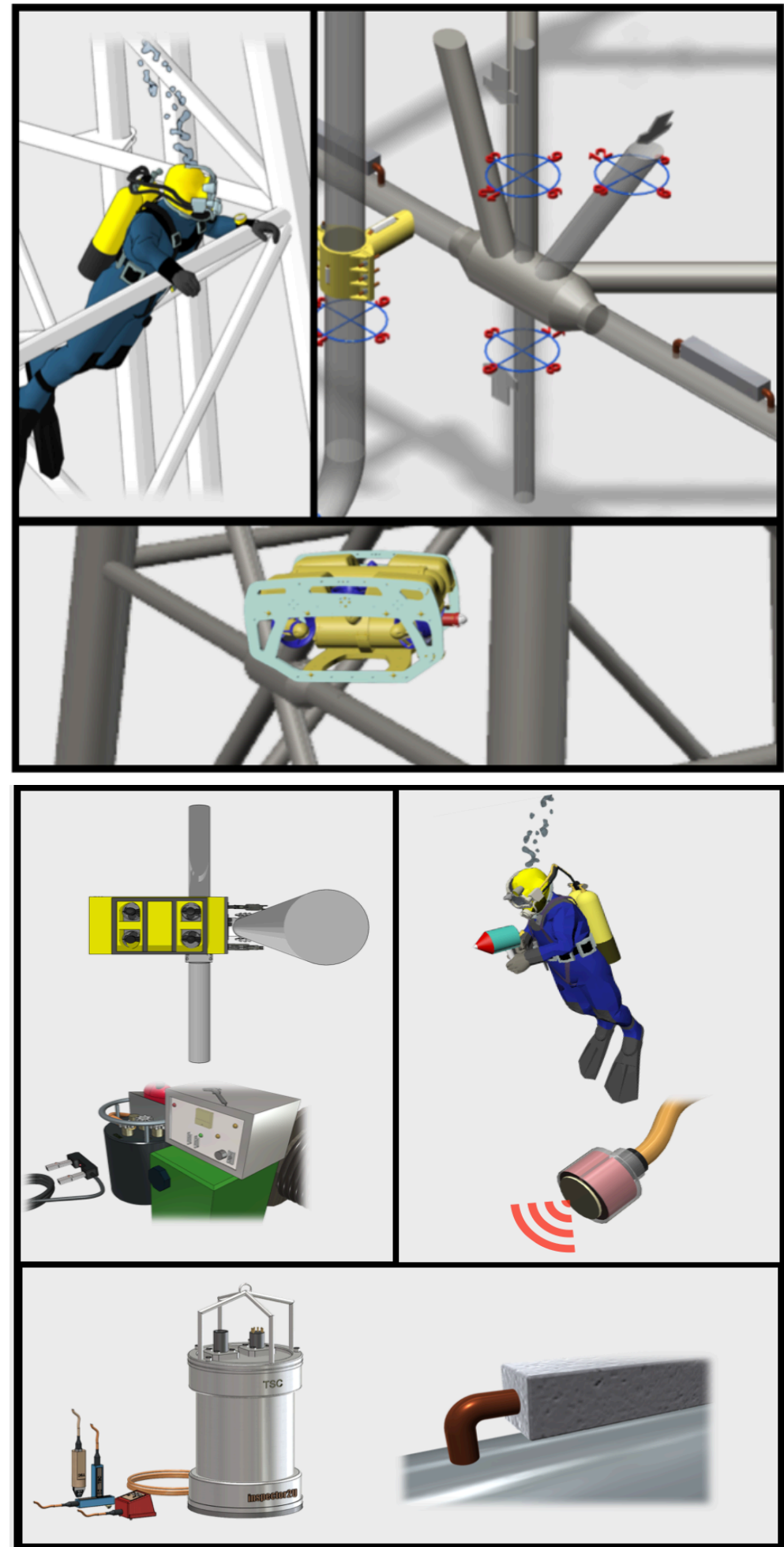
- Full lifecycle inspection, maintenance and repair services for offshore oil & gas and renewable.
- Solutions tailored to customers' needs in close collaboration with stake-holders
- Project & data management incl. proprietary databases, platform inspections, pipe-line surveys and full array of NDT services
- Diving and ROV solutions using latest technologies, e.g., photogrammetry
- Coordination and execution of emergency inspections related to any type of incident, e.g., pipe-line rupture, platform / vessel collisions and environmental impact.
- Frame Agreement with iSurvey Pte Ltd. for dedicated survey and positioning



Inspection Services

Platforms

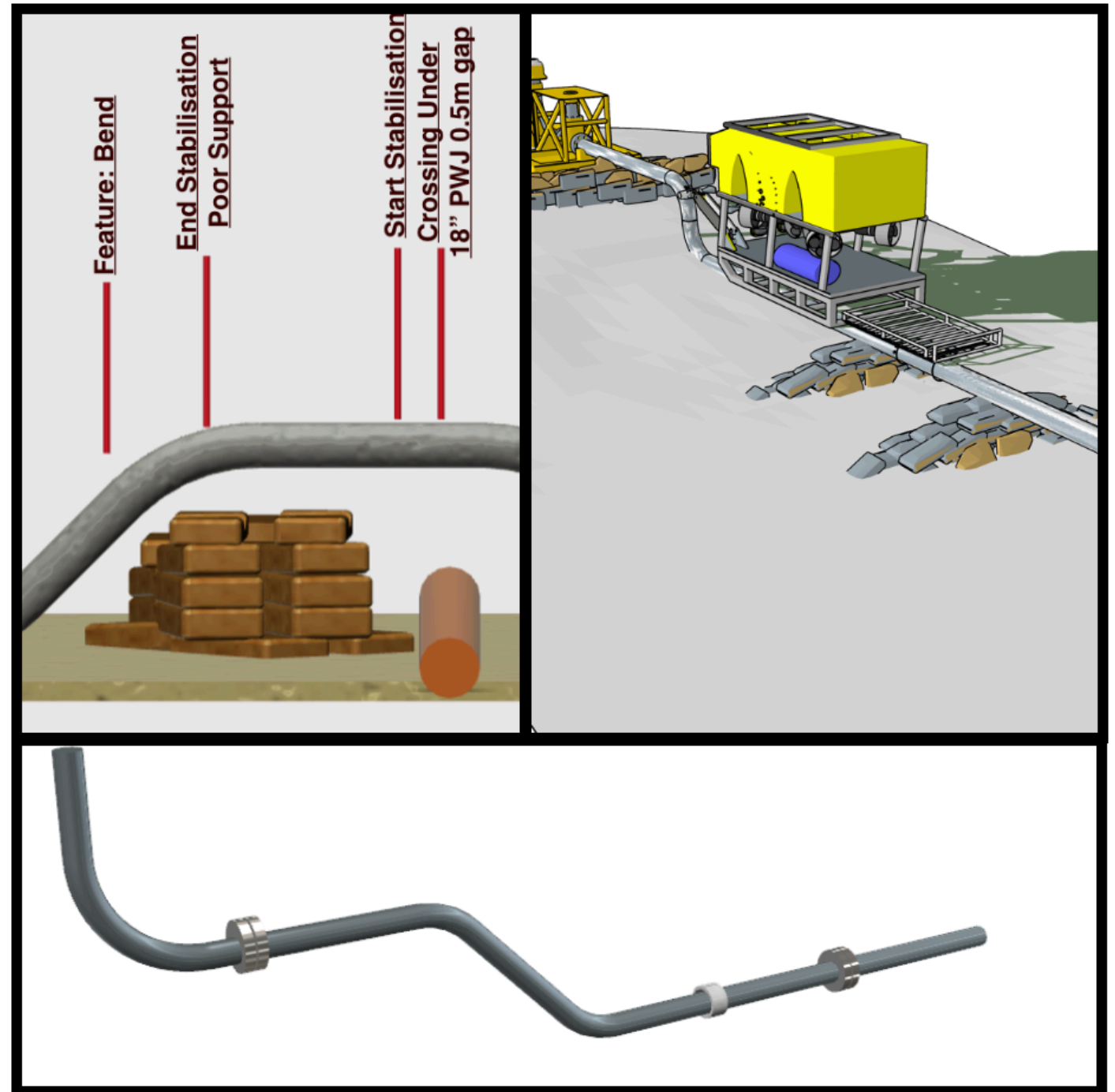
- **GVI (General Visual Inspection)**
To establish overall condition of the components and attachments without cleaning
- **CVI (Close Visual Inspection)**
Requires some cleaning and allows detection of small defects such as missing nuts, visible fatigue cracks in welds and concrete, component abrasion and misalignments
- **DVI (Detailed Visual Inspection)**
A progression from CVI usually requiring more cleaning; ideal for bolted items or coating defects
- **NDT (Non Destructive Testing)**
 - Flooded Member Detection (FMD)
 - Cathodic Protection Measurement (CPM)
 - Marine Growth Measurement (MGM)
 - Wall Thickness Measurement (WTM)
 - Magnetic Particle Inspection (MPI)
 - Alternating Current Field Measurement (ACFM)
- **Intervention**
 - Debris Removal
 - Marine Growth Removal
 - Other Measurements & Operations on Request



Inspection Services

Pipelines

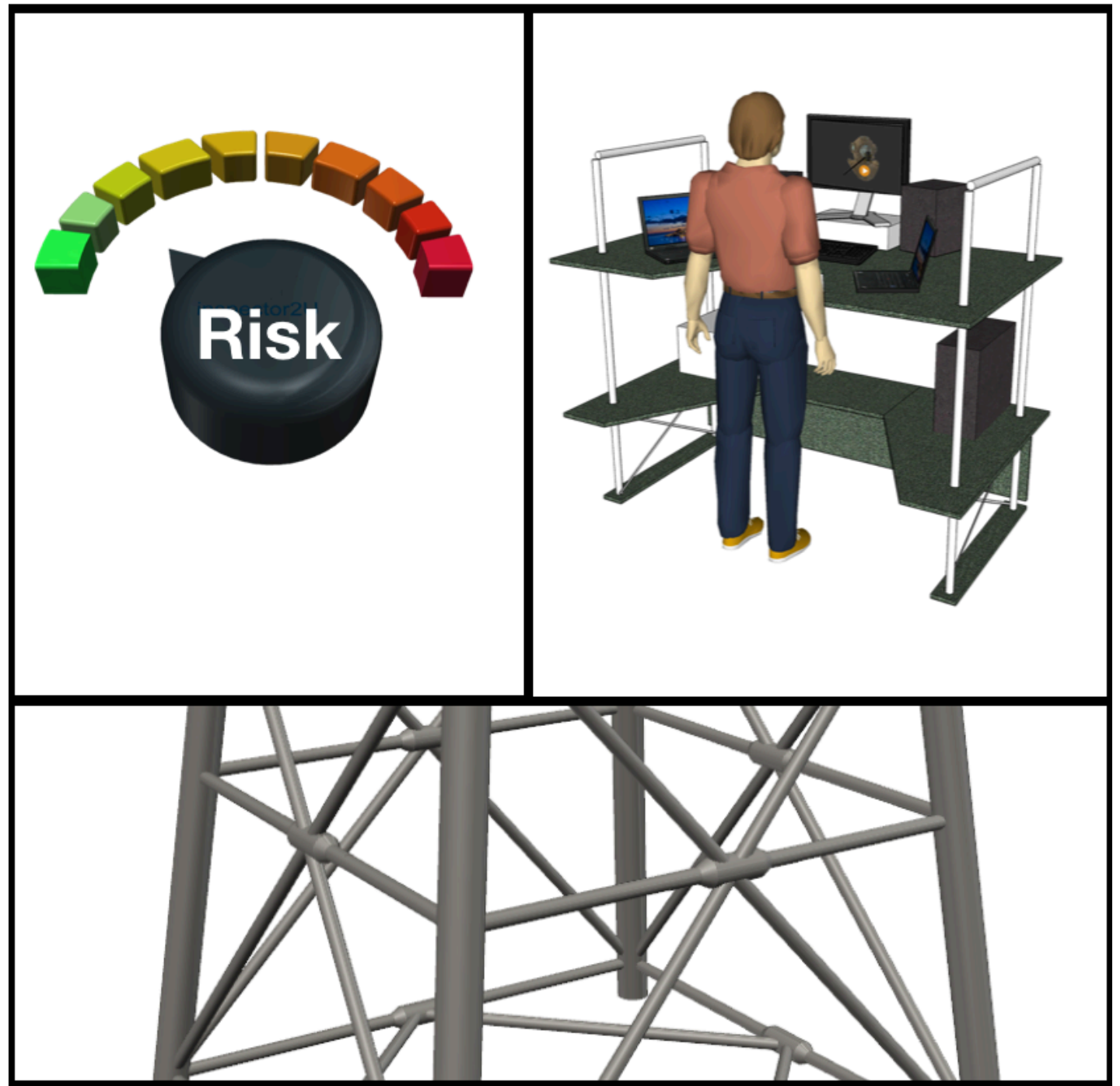
- Unsupported anomalous span lengths
- Identify damage, displacement or deterioration to, or other apparent failure of the pipeline
- Failures of protective systems such as coatings and cathodic protection
- Identify hazards to persons, equipment or the environment, e.g., product leaks and debris
- Inspect for any influence of features which may lead to any of the above anomalies, e.g., metallic debris causing CP drain, seabed debris initiating scours and spans, or marine fouling obstructing an inlet.
- Trench Inspection and Touch Down Monitoring
- Cathodic Protection mapping of subsea buried and unburied pipelines
- Wall Thickness Measurements



Inspection Services

Reporting & Engineering

- High quality Inspection Reporting and Procedures
- Data Processing & Validation
- Project Planning and Project Managing
- QHSE consultancy
- Photogrammetry Modeling
- 3D Sonar Modeling
- Engineering and Design of Project working procedures and apparatus
- Engineering of Anodes replacement and other retrofitting applications
- Client representation on board



Operational Bases

- **Head Quarters, Eastern Seaboard**
- **Songkhla Logistics & Support Base**
- **Phuket Logistics & Support Base**



Regional Reach

- Vietnam
- Indonesia
- Borneo
- East Timor
- Malaysia
- Myanmar



Facilities

- **Pinthong Head Quarters**
 - 550 sqm offices
 - 720 sqm Warehouse & Workshop
- **Songkhla Facility**
 - 1,200 sqm external storage
 - Workshop and Maintenance
- **Phuket Facility**
 - Workshop and Maintenance
 - Logistics Support



People Base

- **45+ Staff Employees**
 - 15 Admin & Mgmt.
 - 30 Operations
- **400++ Contractors**
- **40+ Marine Crew**



DPII - IRM Vessel

- 60m - DPII & 4P Mooring IRM Vessel
- Integrated D023 Certified Dive System
- Integrated iROV and WROV systems
- 24T AHC Knuckle Boom Subsea Crane
- Daughter Craft (SRP) Optional
- Thai Flagged
- BOI Supported



BEACON ALTAIR

DPII / 4P MOORING - IRM ROV & DIVE SUPPORT



PRINCIPAL PARTICULARS

Built / Class:	2008 / ABS
Port / Flag	Bangkok / Thailand
LOA / Breadth:	60.00m / 15.60m
Deck Area:	377 m ²
GRT/NRT:	1973 / 592
Main Eng.:	2 x 1200 kW (3260 BHP)
Propulsion:	CP Azimuth Thrusters
Main. Gen.:	4 x 320 kW / 440 V
Shaft Gen.:	2 x 625 kW / 440 V
Berths:	Total 60 persons
Crane:	12~24T AHC 2,300m
Deck Winch:	1 x 15T Tugger / 2 x 10T Capstan
4P Mooring:	Electro Hydraulic / 1000m wire
Anchors:	4 x 3 ton Delta Flipper
WROV:	Perry Slingsby Triton XLR / TMS
Light WROV:	SeaEye Cougar / TMS

DPII & 4 POINT MOORING
TRITON XLR 150HP WROV
SEAEYE COUGAR LIGHT WROV
DUAL-LARS DIVE SYSTEM
QUINCYs POSITIONING SYSTEM
12 / 24T AHC SUBSEA CRANE
PRECISION LIFTING TO 2,100M
IRM & SURVEY OPERATIONS

sales@beacon-offshore.com

Moored IRM Vessel

- 45m - 4P Mooring - 2400BHP
- Air Diving, ROV & Survey Support
- Integrated D023 Certified Dive System
- Light WROV SeaEye Cougar
- Thai Flagged
- BOI Supported



BEACON SURVEYOR

MULTI-PURPOSE DIVE AND ROV SUPPORT



Beacon Offshore Ltd.



PRINCIPAL PARTICULARS

Built / Class:	Malaysia 2006 / DnV
Port / Flag	Bangkok / Thailand
LOA / Breadth:	45.00m / 12.20m
Deck Area:	230 m ²
GRT/NRT:	870/261
Main Eng.:	2 x 1200 BHP Cummins
Aux. Eng.:	3 x 125 KW / 50Hz
Bow Thruster:	360° Directional Jet @ 255HP
Berths:	14 Crew, 16 Pass. = Total 30
Crane:	360° Pedestal 10T/3m - 2T/15m
Deck Winch:	1 x 10T Hydraulic Tugger
4P Mooring:	Electro Hydr. 32mm x 600m wire
Anchors:	4 x 1000kg Delta Flipper
FiFi:	1 x 600m ³ /hr. @ 13BAR
Dive System:	Integrated & IMCA Certified
ROV System:	SeaEye Cougar Light WROV

FULLY INTEGRATED SYSTEMS
DIVING / ROV / POSITIONING
OVID & IMCA D023 / R006
4 POINT MOORING SYSTEM
IRM ON FIXED INSTALLATIONS
UWILD ON MOBILE UNITS
PIPE-LINE & SEABED SURVEY
FREE SPAN CORRECTION

sales@beacon-offshore.com

Previously Chartered Vessels



DPH Crest Hydra

- Chevron IRM
- EMAS / PTT Pipeline Restoration Works



DPH Endeavour

- Chevron IRM
- PTTEP ACFM / IRM

DSV (SAT) Nusantara

- Petrofac MODU IRM



Daughter Craft

- 15m Aluminum Catamaran - 2 x 280BHP Iveco
- 2 x Hamilton 291 Jet Drives
- 3.8T Knuckle Boom Crane on 45m² Deck
- Fully Integrated 3-Man Diving System
- Mini-ROV Optional
- Operates as SCUBA Replacement Vessel
- Towed or Launched from DP/II Vessel



15M DIVE SUPPORT BOAT "BEACON 2" DATA SHEET

BEACON OFFSHORE LTD.

WWW.BEACON-OFFSHORE.COM



Contact:
Stuart P. Walker

Office:
T: +66 38 348 080
F: +66 38 348 088

Mobile:
+66 81 940 1355

Email:
stuart.w@beacon-offshore.com

Registered Office:
Pinthong Industrial Estate
789/128 Moo 1
Nongkham, Sriracha
Cholburi 20230, Thailand

Main Particulars

- Aluminum hull Catamaran design
- LOA: 14.80m
- Beam: 5.00m
- Clear Deck: 45 sq.m

Machinery & Performance

- Engines: 2 x IVECO N67 @ 280bhp
- Propulsion: 2 x Hamilton 291 Jets
- Generator #1: 3ph., 380V, 70KVA
- Cruise Speed: 15 knots (light)
- Max. Speed: 17 knots (light)
- ME Consumption: 30-60 ltr./hr.
- Fuel Capacity: 2,000 ltr.
- Range: 1,000 NM (at cruise)
- Water Capacity: 1,000 ltr.

Accommodation

- Air-conditioned wheelhouse and cabin with seating for 12
- Dive Control
- Head

Deck & Navigation Equipment

- Hydraulic Knuckle Boom Crane: Palfinger PB8000A 3.8 T/M
- Navigation: Garmin GPS, Raymarine ST40 Fluxgate compass, Raymarine Radar display & plotter: Navtex
- Communication: 1 x fixed & 2 x portable Marine VHF & MF SSB radio
- Safety: Standard SOLAS A.
- EPIRB & SART

Integrated Diving System

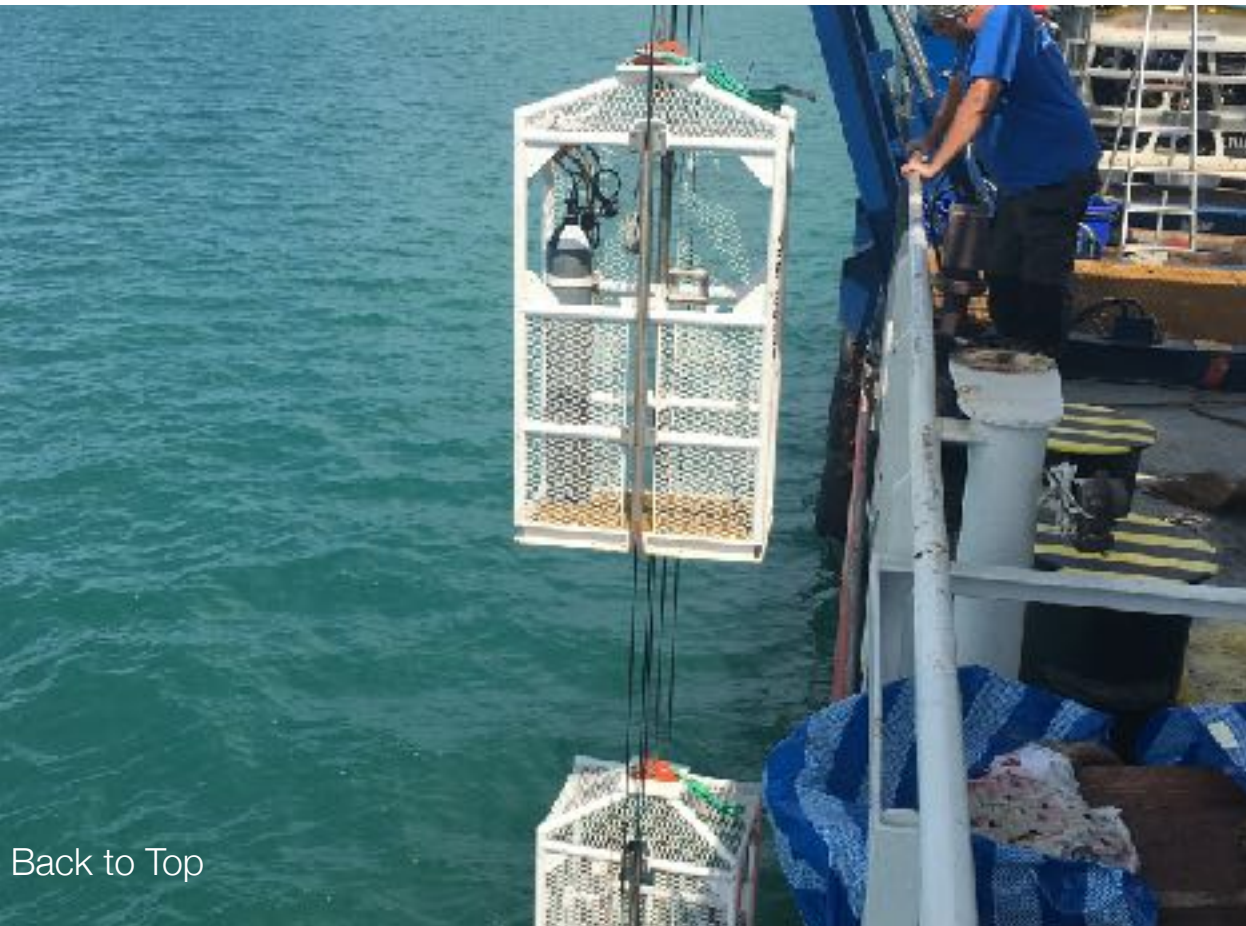
- HP Air: 9cfm Bauer, 4x50ltr 200BAR
- Dive Panel: three-diver c/w main & back-up supply, depth gauges, Amron radios
- Umbilical: 3 x 150m Fibron
- Helmets: KMB 17/18B x 3 sets

Optional Load-Out Equipment

- Emergency Decompression Chamber
- SCUBA: sets as required
- MPI, UT, CP, Eddy Current
- Hull Cleaning (Brush Kart) System
- USBL with full survey suite

Modular Dive Systems

- Multiple Modular Air Diving Systems owned
- Various Configurations to Suit Available Deck Space
- Range of Single & Dual Launch & Recovery Systems (LARS)
- Integrated Dive Systems on Own Vessels



CONTAINERIZED AIR DIVING SYSTEM DATA SHEET - "DS04"

BEACON OFFSHORE LTD.

WWW.BEACON-OFFSHORE.COM



Contact:
Stuart P. Walker

Office:
T: +66 38 348 080
F: +66 38 348 088

Mobile:
+66 81 940 1355

Email:
stuart.w@beacon-offshore.com

Registered Office:
Pinthong Industrial Estate
789/128 Moo 1
Nongkham, Sriracha
Cholburi 20230, Thailand

SYSTEM BUILT TO IMCA D023

Main Components

- 11' Dive Control
- 10' Compressor & Tool Van
- 13' DDC Van

Dive Control Van

- 245 x 335 x 265cm - MGW 4.5T
- Fully air conditioned
- 3-diver air control panel c.w. LP mains and reduced HP back-up air supplies.
- 2 x Amron two-way comms. system.
- SVS color CCTV system c.w. 3 x 19" monitors and DVD/HDD recorders.
- Deck P.A. System & VHF marine band radios
- Twin-pole magnetic knife switch c.w. remote control

Compressor & Tool Van

- 240 x 300 x 260cm - MGW 12.5T / TW 3.2T
- 2 x 16 BAR LP Air compressors into 315 ltr. receivers c.w. three stage filtration.
- 1 x Bauer Capitano 5 cfm HP Air compressor

- Fused mains & back-up electrical panel c.w. 2 x 32A, 2 x 16A take-offs.
- Secure Tool & Spares storage
- Integrated 400A DC welder/inverter

Deck Decompression Van

- 245 x 395 x 265cm - MGW 7.2T
- 60" Twin-Lock DDC c.w. medical lock, interlock, two-way coms., mains/back-up air, lights, hyperbaric fire extinguishers, BIBS etc.

Other Load-Out Gear

- 3+1 x KMB 17/18 helmets c.w. spares
- 3 x 150m Fibron umbilicals c.w. air, pneumo, comms and video
- 16 x 40 ltr. / 150 BAR medical oxygen
- 4 x SCUBA Bail-Out sets c.w. spares
- BROCO cutting & welding gear c.w. spares & consumable.
- 2 x 15 HP hydraulic Pack c.w. assorted tools
- Full safety inventory: first aid kit c.w. defibrillator, fire extinguishers, breathing apparatus etc.
- Single or dual LARS options

ROV Systems

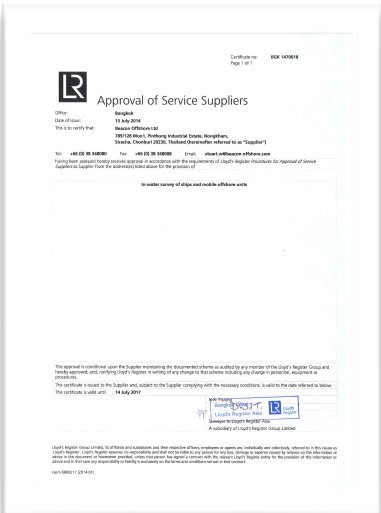
- Triton XLR WROV
- SeaEye Cougar Light WROV
- Outland Portable Mini-iROV Systems
- TMS & Free Swimmers
- Expanding Range of iROV and WROV Systems



QHSE and Accreditations

The Beacon Offshore Ltd Quality, Health, Safety and Environment (QHSE) philosophy is to manage all work activities using a strategic process founded on management commitment, supervisor accountability and personal responsibility. We facilitate a documented process based on safe and correct behaviors, appropriate levels of training, internationally recognized standards, fairness, and a proven system of performance metrics.

Beacon Offshore is ISO 9001:2015 certified by DnV and accredited IMCA Contractor. We are also authorized by all the major international Classification Societies.



Select Offshore Client Roster

- PTT Plc
- PTT E&P
- Chevron
- Petrofac
- Mubadala
- Kris Energy
- PTT Global Chemical
- Star Petroleum Refinery
- Bluewater N.V.
- Maersk Drilling
- SBM Offshore
- Fugro
- Omni-Offshore
- EMAS Energy

