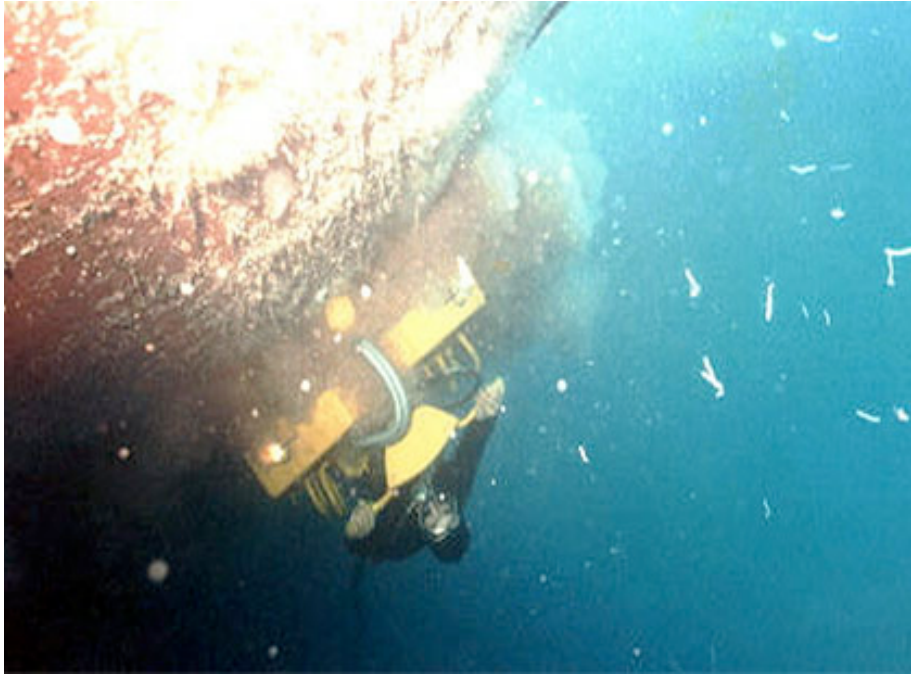


HULL CLEANING SYSTEM

DATA SHEET

BEACON OFFSHORE LTD.

WWW.BEACON-OFFSHORE.COM



Contact:

Stuart P. Walker

Office:

T: +66 38 348 080

F: +66 38 348 088

Mobile:

+66 81 940 1355

Email:

stuart.w@beacon-offshore.com

Registered Office:

Pinthong Industrial Estate

789/128 Moo 1

Nongkham, Sriracha

Cholburi 20230, Thailand

EQUIPMENT DATA

Brush Kart

- Three hydraulically driven brush-heads spin at up to 1000 RPM
- Brush-heads are hinged to follow the curved areas of the hull
- Front traction wheels create steering action and forward motion.
- Unit cleans a 1.20m wide swath
- Range of brushes for varying grades and thickness of marine fouling

Hydraulic Power Pack

- Water cooled and diesel driven
- Skid mounted in offshore crash-frame
- 120 ltr./min. @ 140 BAR

Hose & Reel

- Twin thermoplastic hose
- 3/4" feed and 1" return
- 180m hose on skid-mounted reel

Propeller Polishing Head

- Stanley GT23 mobile hydraulic power pack; 40 ltr./min. @ 140 BAR
- Stanley GR29 polishing head
- 8" 3M Scotch Brite polishing pads

GENERAL INFORMATION

Brushes & Pads

Developed in consultation with major paint manufacturers, our range of hull cleaning brushes effectively remove any type of marine fouling encountered.

Propeller polishing to highest obtainable Rupert grade is accomplished using standard 8" 3M Scotch Brite polishing pads.

Recommended Frequency

For the best result and maximum fuel efficiency, hull cleaning and propeller polishing should be carried out every 6-12 months, depending on the vessel's pattern of operation. Frequent cleaning of the hull will ensure marine growth is removed before it penetrates and damages the paint coat.

Inshore Deployment

Hull Cleaning is provided turn-key from our own work-boats at all ports and anchorages along the Eastern Seaboard.

Offshore Deployment

Our divers are BOSIET certified and all system components are load-tested and designed for offshore work. Hull Cleaning of FSO units can be done from any small SPV or AHTS type vessel.