

GO EXPLORER

DPII DIESEL ELECTRIC— IRM ROV & DIVE SUPPORT



PRINCIPAL SPECIFICATIONS

Built / Class	2012 / DNV
Port / Flag:	Majuro / Marshall Islands
LOA / Breadth:	79.67m / 16.4m
Deck Area:	506m ²
Main Eng.:	Cummins- 6 x KTA50DM
Propulsion:	2 x Azipod Thrusters
Main. Gen.:	6 x 690V – 60Hz 1,380kVA
Crane:	25T @ 10m Offshore Knuckle Jib
WROV:	TRITON XLS
Light WROV:	SEAEYE COUGAR XT

KEY FEATURES

- ◆ DP2 DNV Comfort Class
- ◆ ROV Hangar
- ◆ Sky Lounge
- ◆ ROV Operations Room
Conference Room and Office Areas
- ◆ Full Survey and Navigation System
- ◆ Accommodation for 66 Personnel
with up to 44 Bunks available for
Project/Client
- ◆ NOPSEMA Australian Safety Case
(Lifting, ROV and Air Diving
Operations)

GENERAL DESCRIPTION

Classification	DNV, +1A1, SF, LFL*, COMFV (3), E0, DYNPOS-AUTR, CLEAN, DK(+)
Place of Build	Batam, Indonesia
Year of Build	2012
Flag	Majuro, Marshall Islands

MAIN PARTICULARS

Design	MT 6009 L MKII
LOA	79.67m
Breadth	16.4m
Depth	7.45m
Max Loaded Draft	6.22m

CAPACITIES

Deadweight	2,978 Tons
Gross Tonnage	4,071 Tons
Deck Cargo	600 Tons
Cargo Deck Dim.	37.8m x 13.4m
Deck Area	506m ²
Deck Strength	5 T/m ²
Drill / Ballast Water	1,730m ³
Potable Water	520m ³ & 35m ³ RO Plant
Methanol	205m ³
Glycol	205m ³
Base Oil	150m ³
Fuel Oil	1,730m ³

ACCOMMODATION

Single Berth Cabins	14
Double Berth Cabins	26
Total Accommodation	66
SPS Code IMO A.534(13)	Up to 50 Special Persons

DECK EQUIPMENT

Capstans	2 x 16t CEMP
Cargo Securing	3 x 3t CSE
Deck Crane	3T @ 10m
Offshore Crane	25T @ 10m Offshore Knuckle Boom Crane AHC

DISCHARGE

Fresh Water	2 x 200m ³ /hr
Ballast / Drill Water	1 x 250m ³ /hr
Methanol	2 x 75m ³ /hr
Base Oil	1 x 150m ³ /hr
Fuel Oil	2 x 200m ³ /hr

PROPULSION AND MACHINERY

BHP / kW	10,100 bhp / 7,746kW
Diesel Generators	6 x Cummins KTA50DM 1,291kW
Stern Thrusters	2 x Schottel Z-Drive STP1212- 2 x 1500kW
Bow Thrusters	2 x STT 003 CP 800kW
Emergency Generator	1 x 99kW / 124kVA

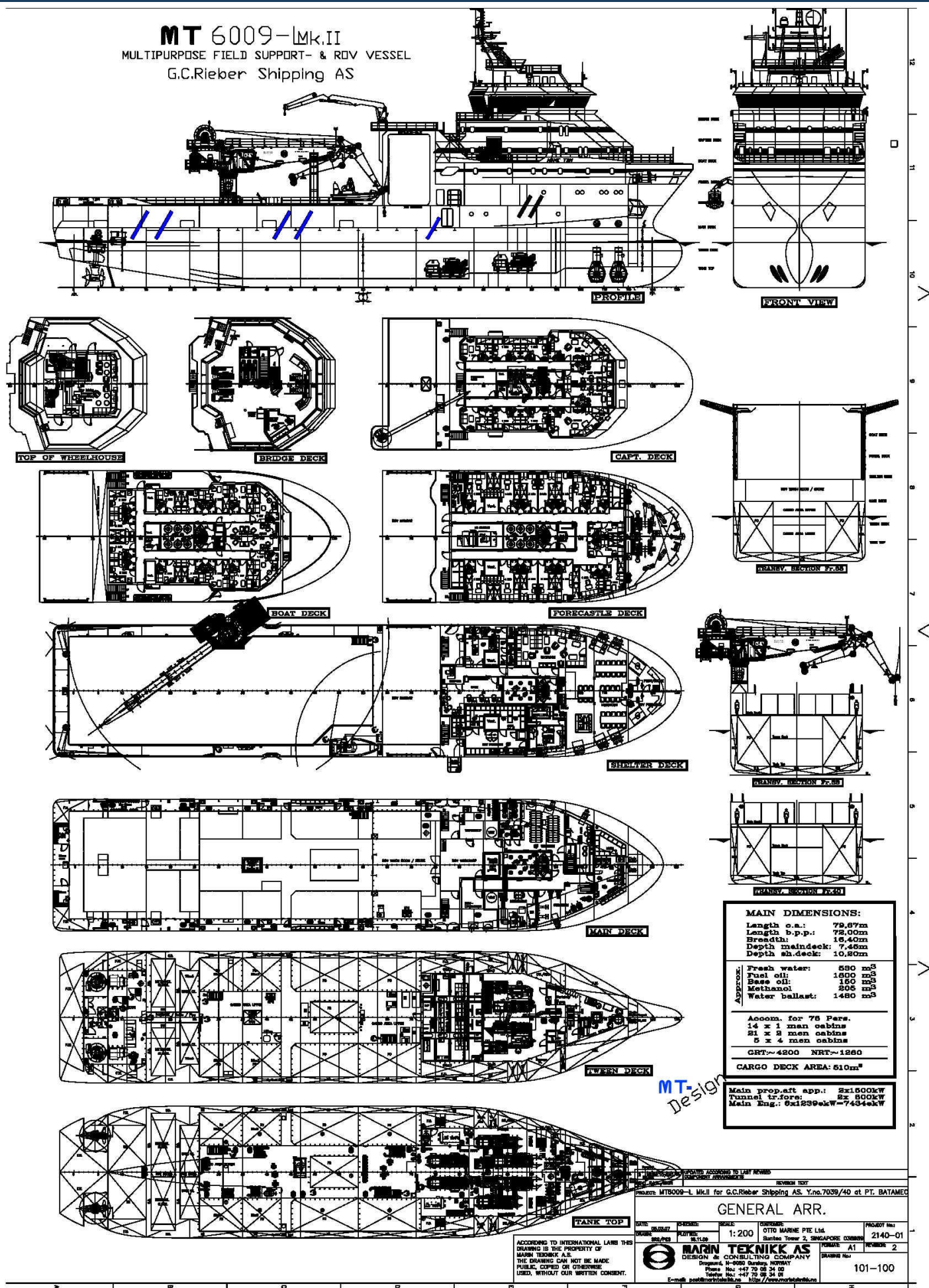
DYNAMIC POSITIONING

DP System	Kongsberg kPOS DP II (AUTR)
Position References	2 x HiPAP 500 2 x DGPS 1 x Fanbeam 1 x Taut Wire
System Voltage	440v / 220v 60hZ

PERFORMANCE

Economical Speed	10 knots @ 11-14m ³ /day
DP Mode	6-8m ³ /day

MT 6009-Lmk.II
MULTIPURPOSE FIELD SUPPORT- & ROV VESSEL
G.C.Rieber Shipping AS



TRITON XLS: HEAVY DUTY WORK CLASS 150 HP ROV



The Triton XLS system's 3,000 kg of through-frame lift provides a platform for a wide variety of tooling modules and custom intervention work skids.

The Triton XLS is a highly dependable work-class vehicle designed for extreme water depths and demanding subsea construction tasks. The system effectively supports offshore projects and construction tasks. The Triton XLS offers a compact combination of thrust, payload, high through-frame lift, and sensor interface to support most offshore work requirements.

SEAEYE COUGAR XT: THE SMALL VEHICLE WITH REAL WORK CAPABILITIES.

The Cougar is a highly flexible, small, yet extremely powerful vehicle depth rated to 2000m. 250 Volts DC thrusters provide precise handling and control in strong current environments.

Designed to accommodate heavy duty tooling via a system of quick-change tool skids, the Cougar-XT is ideal for survey work, IRM, drill support, light construction projects and salvage support operations.



MULTIPURPOSE FIELD SUPPORT & ROV VESSEL